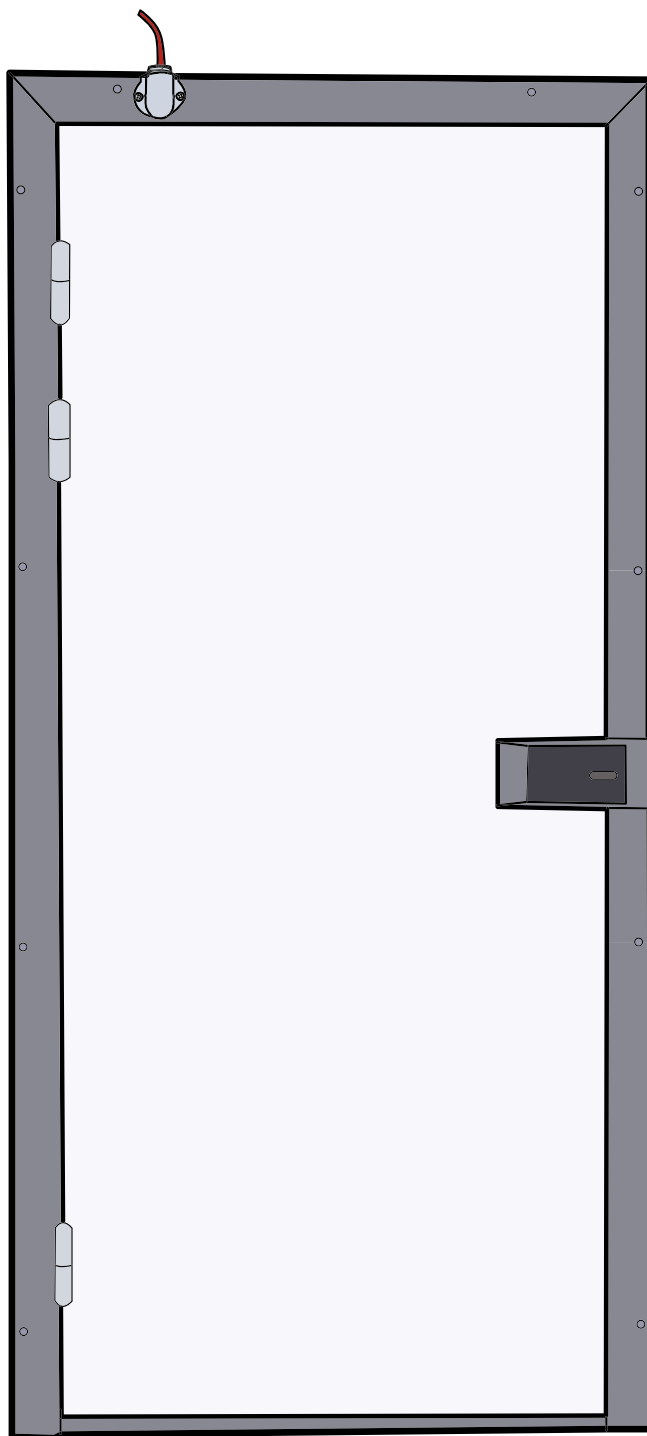
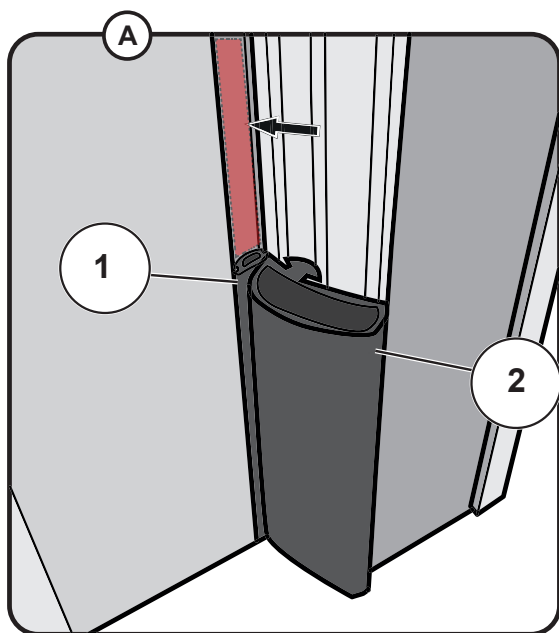
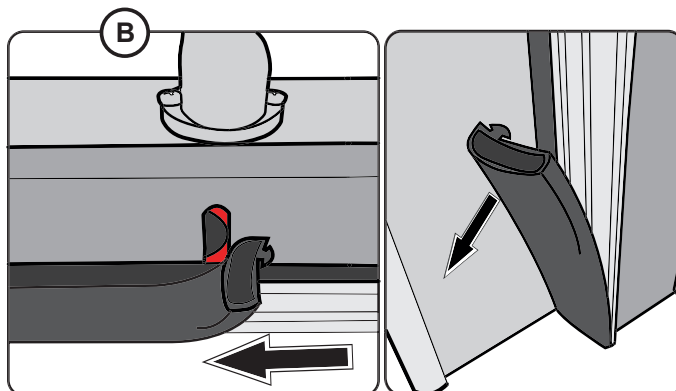


## Change of heating wire in freezer door, FD





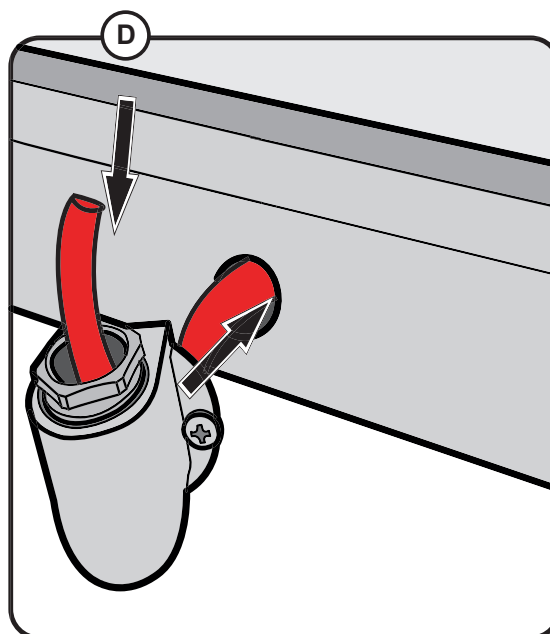
A. The heating cable is placed behind the seal (1). Before exchange, remove the seal and the covering seal (2).



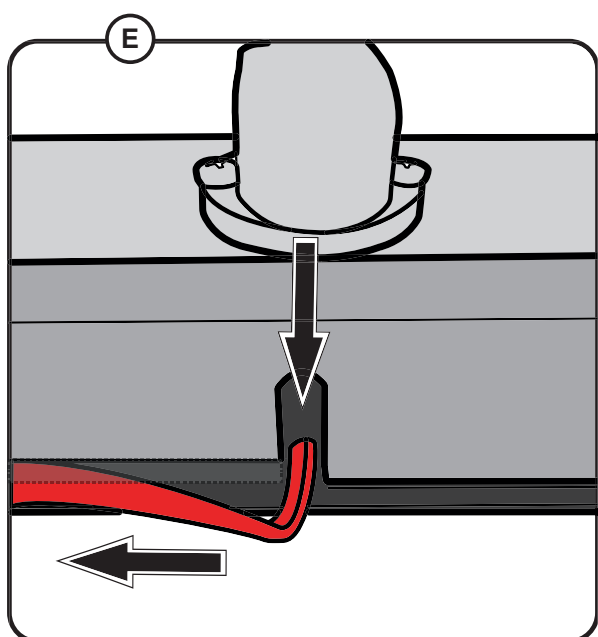
B. Start by removing the covering seal of the whole door frame.



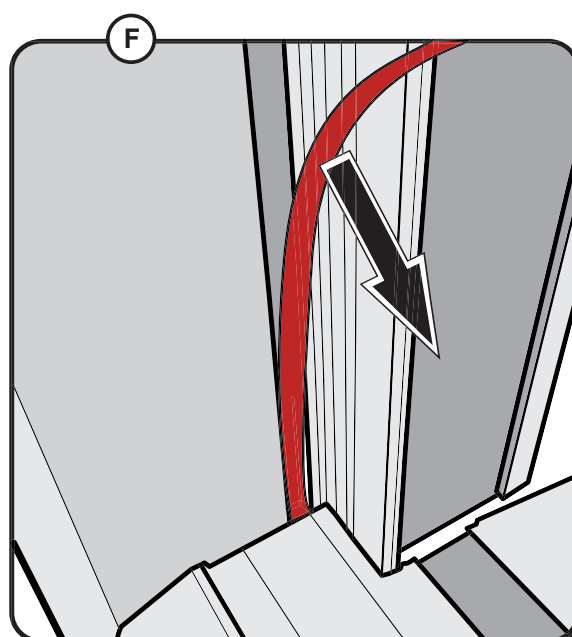
C. Then remove the seal.



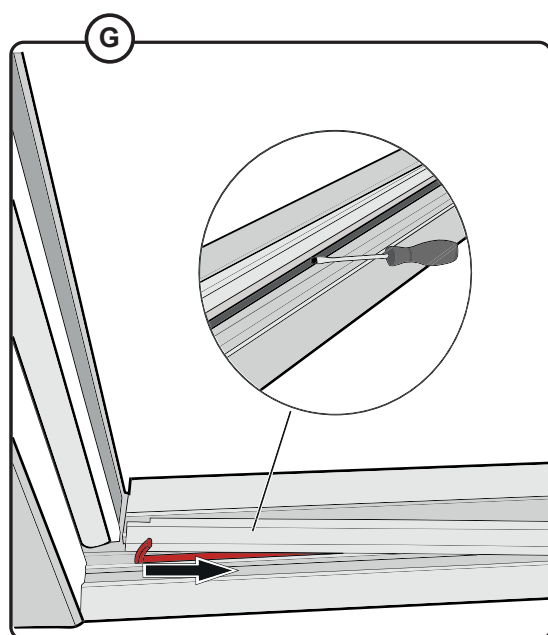
D. Unscrew the conduit entry and demontage the old heating cable through the conduit entry and the hole.



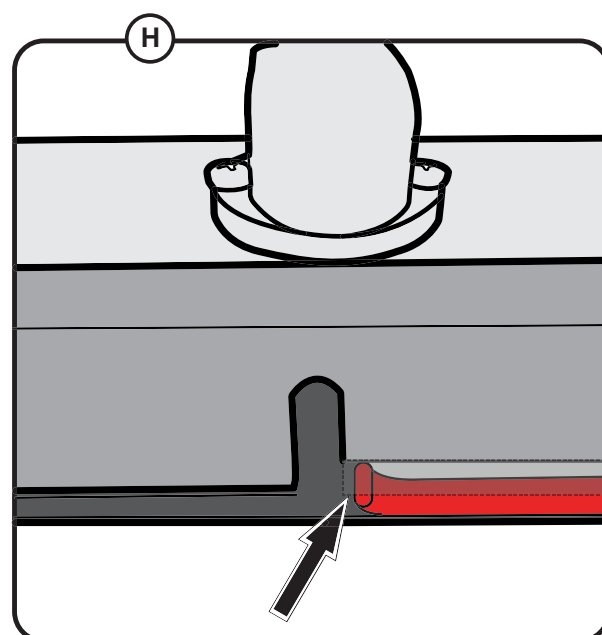
E. Lead the heating cable through the track under the conduit entry on the upper door frame and continue to remove the cable along the door frame.



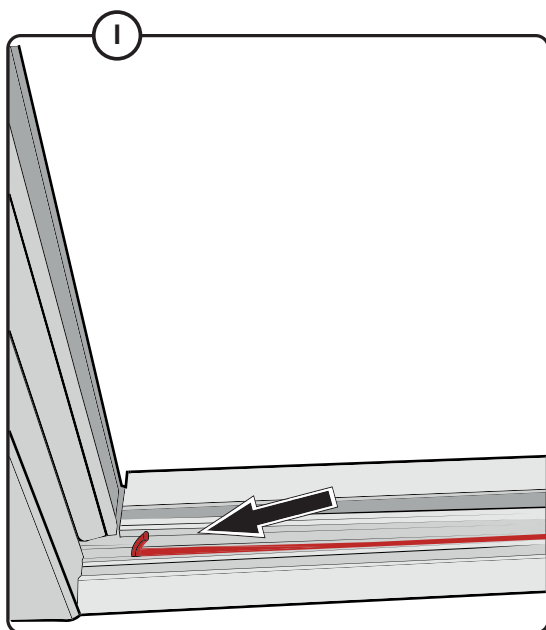
F. Continue all the way down.



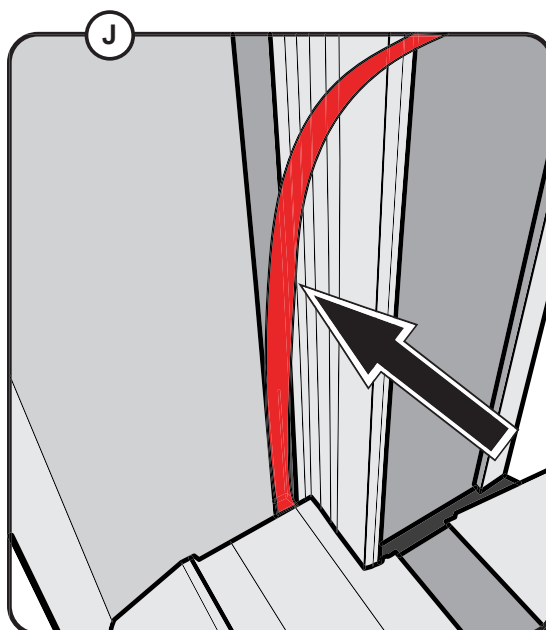
G. Demontage the treshold. The heating cable will be revield. Now continue to remove the heating cable until it's fully removed.



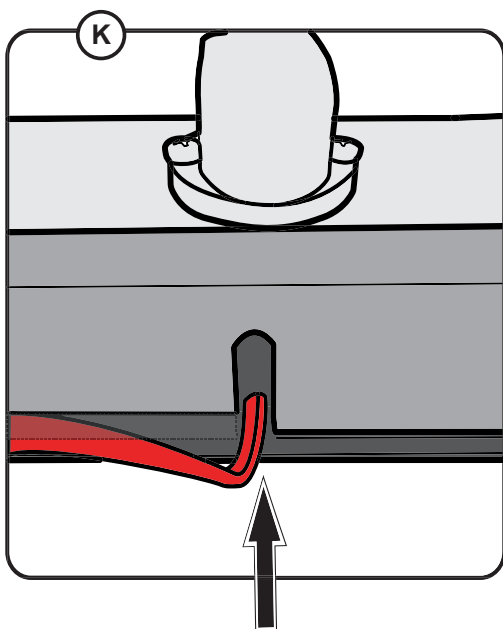
H. Attach one of the ends of the new heating cable at the upper door frame against the track. Push the cable in and attach along the door frame.



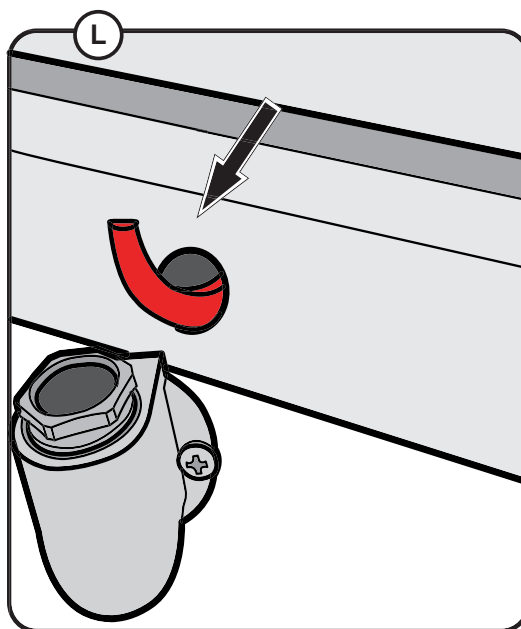
I. Attach the heating cable under the treshold.



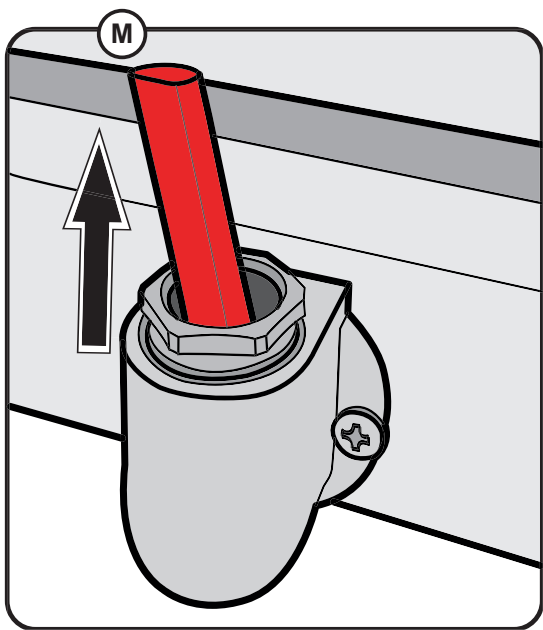
J. Continue to attach along the whole door frame.



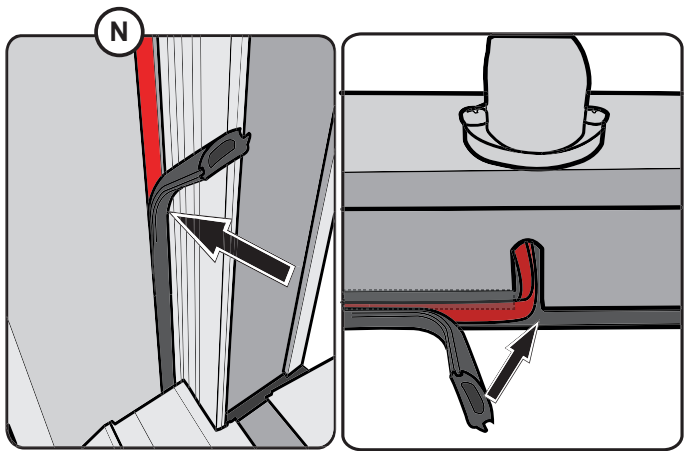
K. Insert the other end of the heating cable into the track on the upper door frame.



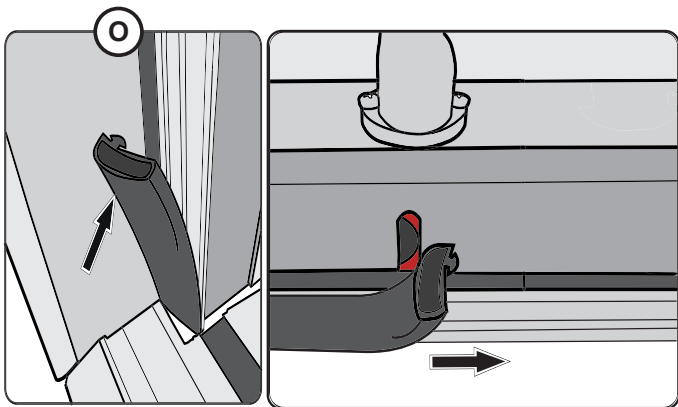
L. Insert the heating cable through the hole at the conduit entry.



M. Insert the heating cable through the conduit entry.



N. Install the seal along with the whole door frame.



O. Then install the covering seal along with the whole doorframe.